



Lodge Accommodation & Meals

School group prices 1st January 2012 – 31st December 2012

Group size	Per Night per person	B/fast cont per person	Morning Tea per person	Lunch per person	Afternoon Tea per person	Dinner 2 course per person	Supper per person	Total 1 night inc meals per person
Up to 129	\$26.50	\$9.10	\$1.10	\$8.00	\$1.10	\$11.20	\$1.10	\$58.10

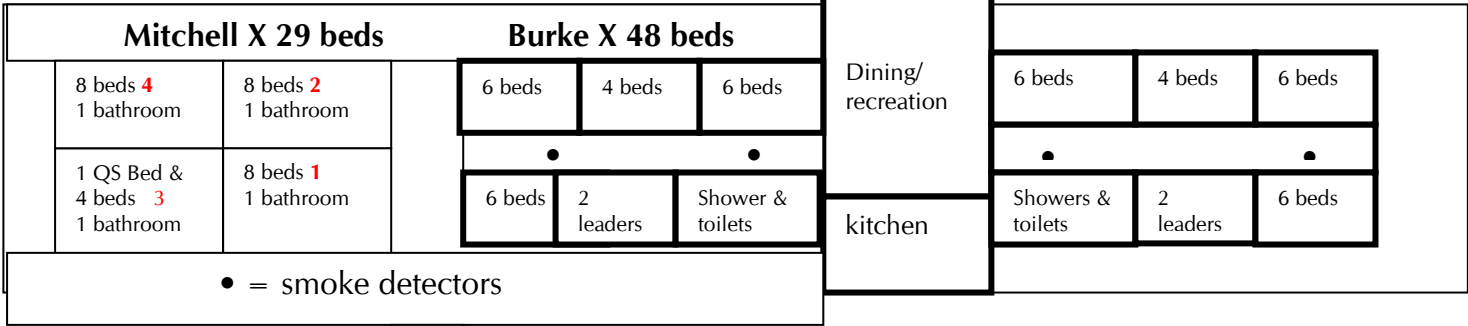
Please note: costs for meals are based on the standard requirements. Please refer to camp catering order form for variation available and the associated costs. **All accommodation & meal prices are GST inclusive.**

- **Breakfast** is served as continental- choice of two cereals –weetbix & sultana bran, toast & spreads, Milo, tea & coffee, orange/apple juice – students are encouraged to drink fresh water and milk – to promote this, students will be presented with a “Pioneer Settlement” water bottle on arrival which they can use during the camp and take home when they leave.
- **Lunch** is served inside the Pioneer Settlement grounds – unless otherwise organised – **menu:** hot dogs with cheese or hamburgers with cheese and salad or fresh salad rolls (Options are provided where special dietary requirements), fresh fruit is served with all lunches. **Cut Lunch to Go:** Salad rolls, fresh fruit & snack.
- **Afternoon tea** is served at the Lodges – fresh fruit.
- **Dinner** is served at the Lodges – **Main menu:** Roast Chicken & vegetables, Spaghetti Bolognese & salad, Shepherds Pie & vegetables, Quiche & salad, **Sweets menu:** fruit salad & ice cream, pancakes with maple syrup & ice cream, peaches and ice cream, hot apple strudel custard
- **Supper** is served at the lodges – **menu:** cake, Milo, Tea & Coffee.
- **Please inform us of any specific dietary requirements so that we can ensure your stay is adequately catered for.**
- **Self-catering** is available by arrangement. A self-catering surcharge of \$6.80 per person per camp applies.
- Meal costs are applicable to all staff and guests (excluding coach captains)
- Coach captains stay free of charge
- Group sizes are based on paying guests. Non-paying support staffs are not included in group size.
- Prices are the same for adults and children.
- Support staff is accommodated at no charge- up to a maximum staff / student ratio of 1:10.
- Linen is not provided. Groups need to supply their own sleeping bag, pillowcase and towel. Pillows are provided. Alternatively, linen & blankets may be hired by prior arrangement.
- Groups are required to make their own beds.
- Groups are required to assist with setting up and cleaning up dining room for meal

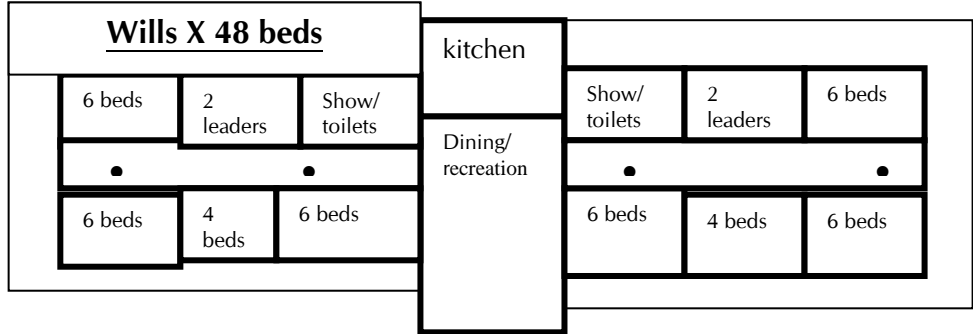
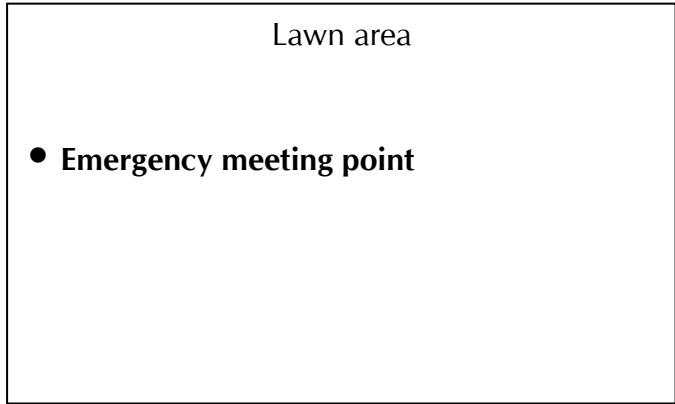
Pioneer Settlement Lodges Floor plan

All lodges are fully air-conditioned for comfort

Lawn area



R
A
M
P



Leaders rooms in Burke and Wills have ensuites

Mitchell 3 is reserved for coach drivers if groups are travelling by bus.